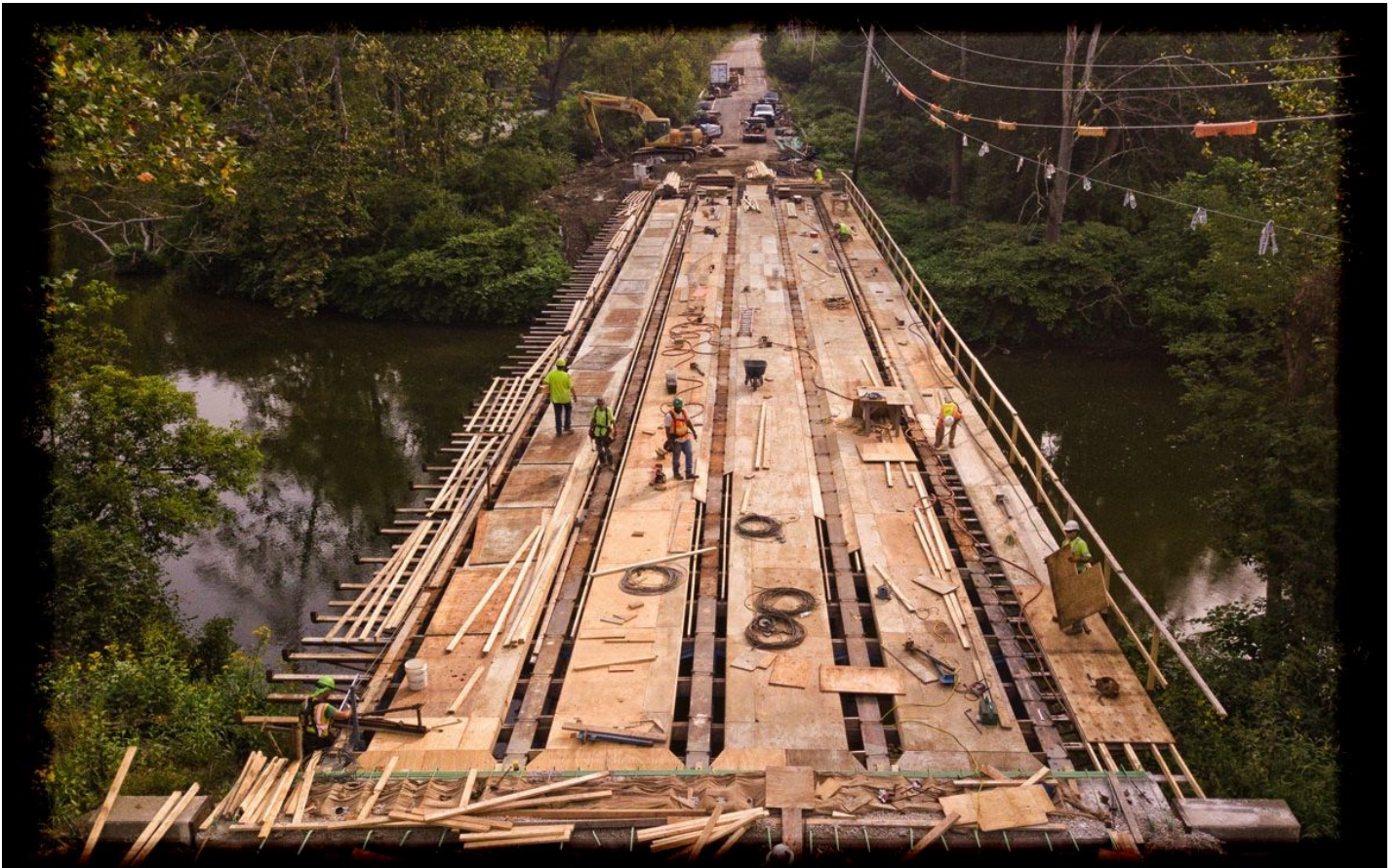


2019 ANNUAL REPORT

PREPARED BY:
ALAN BRUBAKER, P.E., P.S.
SUMMIT COUNTY ENGINEER

ISSUED APRIL 15, 2020



West Bath Road Bridge Rehabilitation
Photo Credit: Eilert Ofstead



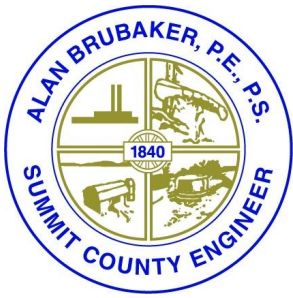
High Level Bridge Inspection

Mission Statement

Our mission is to serve the Summit County community by maintaining and improving our region's infrastructure, encouraging economic development, and ensuring a safe and efficient transportation system while protecting the environment.

TABLE OF CONTENTS

LETTER TO SUMMIT COUNTY COUNCIL	1
SERVICES	2
NOTABLE EVENTS	3
PUBLIC SERVICES DIVISION	4
BRIDGE MAINTENANCE	6
ENGINEERING DIVISION	7
BRIDGE SECTION	9
COMMUNITY INVOLVEMENT	10
DRAINAGE SECTION	11
SURFACE WATER	12
HIGHWAY SECTION	13
ALLOTMENT SECTION	13
CONSTRUCTION SECTION	14
ADMINISTRATION DIVISION	16
HUMAN RESOURCES SECTION	16
FINANCE SECTION	17
CURRENT AND UPCOMING PROJECTS	18



ALAN BRUBAKER, P.E., P.S.

SUMMIT COUNTY ENGINEER

April 15, 2020

Summit County Council
Ohio Building – 7th Floor
175 South Main Street
Akron, Ohio 44308-1314

Dear Members of Summit County Council:

In accordance with the Ohio Revised Code Section 5543.02, I respectfully submit the Summit County Engineer's (SCE) annual report for the year 2019. Due to the COVID-19 pandemic and resulting reduced staff, this is a slightly abbreviated report. This report will be updated with additional information as employees can report back to work and provide the necessary information. This report reviews the activities of this Office for 2019, highlighting major infrastructure improvement projects and the maintenance of our existing infrastructure. The office continues to be an active partner with the townships, cities, and villages in their efforts to update and improve local infrastructure systems.

Our primary sources of revenue are license taxes and gasoline taxes. In 2019, tax revenue was approximately \$18.9 million, a 16% increase from the previous year. In 2019, capital expenses were approximately \$8.5 million, an increase of \$2.6 million from the previous year. These increases are due to the increased revenues from the state of Ohio gas tax increase as well as additional \$5 fee license fee increase from 2017.

2019 was our eleventh year in office and we had many successes. The County adopted a Surface Water Management Program in 2017 and 2019 was the first full year of the implemented program for Bath Township. SCE was able to expand our capital program and begin rehabilitating and replacing some of the County's aging bridges.

This annual report highlights many of our projects and initiatives. If you have any questions regarding past accomplishments or the future plans set forth within this Annual Report, please contact me at (330) 643-2850.

Sincerely,

Alan Brubaker, P.E., P.S.
Summit County Engineer

Services

**Summit County Engineer Alan Brubaker, P.E, P.S.
is pleased to offer the following services to the public:**

- Design, construction, inspection and maintenance of Summit County highways, bridges and dedicated stormwater facilities.
- Surface Water Management for Bath Township starting in June 2018.
- Installation, inspection, and maintenance of traffic safety equipment, guardrail, signs, traffic control signal systems, and pavement markings on county highways and bridges.
- Snow and ice control on Summit County highways and in other communities by agreement.
- Engineering design and other services to Summit County's cities, villages and townships.
- Coordination of local efforts to procure state and federal funding for infrastructure.
- Township representation: SCE has dedicated an employee to cover each township, attend meetings, and stay in touch with local issues as they arise.



Engineer Brubaker, Engineer Conrad, Engineer Marquard, and Engineer Bennett were part of a University of Akron GradTalk panel for County Engineers in 2019.

**THE SUMMIT COUNTY ENGINEER
HAS A WEALTH OF RESOURCES
AND INFORMATION FOR PUBLIC
USE. PLEASE LET US KNOW HOW
WE CAN HELP YOUR COMMUNITY!**

CALL US AT 330.643.2850

www.summitengineer.net

SCE has a new website! Here's just some of the resources currently available on our website:

- List of current projects & initiatives
- Conveyance standards
- Road records
- Bid notices
- Traffic alerts
- SCE publications
- Surveys
- Subdivision plats & documentation
- Monument mapper
- County maps
- Road and bridge permit forms
- Township services forms

Your Summit County Engineer maintains:

- Over 360 lane miles of roads - in all seasons
- Approximately 280 bridges throughout the County - and inspects each one, **every** year
- Over 1200 culverts
- Hundreds of miles of road right-of-way and roadside ditches
- Regional stormwater facilities, including assessed subdivisions
- Over 30 signalized intersections

Notable Events

New Website for 2020

Summit County Engineer Alan Brubaker, PE, PS, unveiled a new website on Wednesday, April 1, 2020. The updated website includes a project search function, scrolling alert features, and streamlined information for residents, cities and townships, contractors, developers, and surveyors. In addition, there are multiple online forms that website users can fill out and immediately reach the appropriate contact person.

Forms:

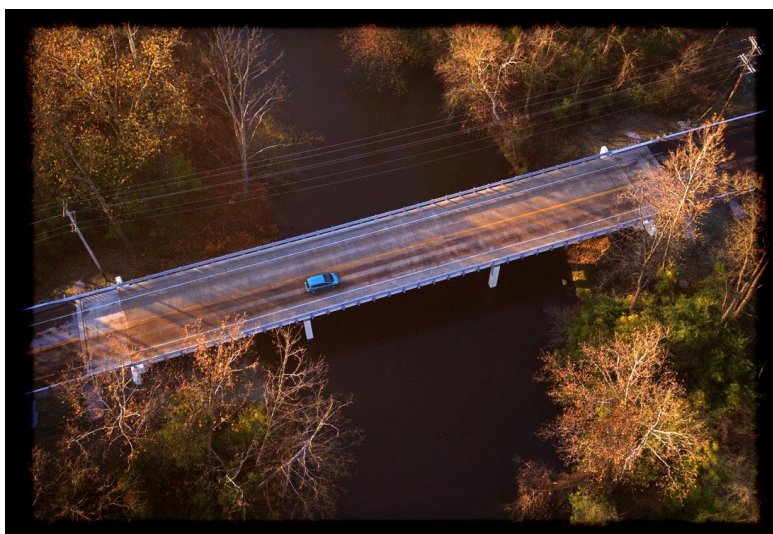
- General Contact Form – Use the dropdown box to determine the nature of the question or concern and send your comments directly to the appropriate contact person.
- Township Request for Engineering Services Form – This form is for townships seeking engineering services from the Summit County Engineer's Office.
- Permissive License Fee Allocation Form – This form is for cities seeking reimbursement of the Permissive License funds the County Engineer's Office administers.
- Surface Water Management District Forms
 - Appeals Form
 - ERU Credit Form
 - Drainage Concern Form
- Miniature Bridge Building Registration Forms – Teachers can register their high school's team, students can fill out the release form, and apply for scholarships directly from the website.

reCAPTCHA software, necessary for users to be able to send questions or concerns through the website, could no longer be updated on the previous website, google mapping software for projects was no longer working, and it had no special mobile view. The new website can be viewed on mobile devices, has increased security, and is much more user friendly.

The website address is www.summitengineer.net.

West Bath Road Bridge Rehabilitation Photography Project

Eilert Ofstead, his drone, and his camera chronicled the West Bath Road Rehabilitation Project from start to finish. We are excited to share his work. This was a \$1.2 million dollar design-build project that included new reinforced concrete deck, new bridge railing, structural steel repairs, field painting of structural steel, substructure repairs, new reinforced concrete approach slabs, and minimal approach roadway work. The pictures and write up can be found at <http://www.eilertpix.net/BathBridge>.



Public Services Division

The Public Services Division is responsible for maintaining over 360 lane miles of county roadway, 281 bridges, over 1,200 culverts, guardrail, berms, vegetation control, ditches, pavement markings, traffic signals, tree trimming and removal, deceased animal removal, culvert pipes, fleet maintenance, retention and detention ponds, roadside mowing, and snow and ice control.

The Public Services Division's administrative office and the South Street Station are located at 601 East Crosier Street in Akron, with an outpost at Boston Mills Station located in Boston Township. Bath, Boston, Copley, Coventry, Northfield Center, Richfield, Sagamore Hills, Springfield and Twinsburg townships are provided general maintenance and snow and ice control by our department. In addition to our South Street and Boston locations, the County has salt storage facilities in Bath, Lakemore, and a new facility in Akron at the Copley Road interchange.

In 2019 a total of 1,141 requests for service were received and completed throughout the County for roadside mowing, ditching, berm cutting, pot hole repairs, tree trimming, weed control and asphalt patching. The department used approximately 3,000 tons of stone, 420 feet of culvert pipe (various sizes), 1,100 tons of asphalt and 10,200 tons of salt for snow and ice control.



Skyhaven Subdivision Drainage Maintenance

Public Services Division

Our South District replaced culverts on Wright Rd, Canton Rd, Killian Rd, Cormany Rd and Summit Rd. They also performed culvert repairs and drainage improvements on Myersville Rd, S. Hometown Rd, Arlington Rd, Cleveland-Massillon Rd (3 locations), Main St., and Warner Rd. In addition, roadside mowing, mailbox repairs, bridge repair, ditching, culvert cleaning Akron Peninsula Road berm cutting, pavement repairs, tree trimming, and weed control were also beaver dam removal performed throughout the South District.

Our North District performed culvert replacements on Bath Rd, Brandywine Rd, Ira Rd, Akron Peninsula Rd, Cleveland-Massillon Rd, Riverview Rd, Revere Rd, and Medina Line Rd. They made drainage improvements on Cleveland-Massillon Rd, Yellow Creek Rd, Ira Rd, W. Bath Rd and Medina Line Rd. They performed catch basin replacements and repairs on Brandywine Rd, Cleveland-Massillon Rd (3 locations), Springside Drive (2 locations), and Akron Cleveland Rd (2 locations). In addition, roadside mowing, mailbox repairs, bridge repair, ditching, culvert cleaning, berm cutting, pavement repairs, tree trimming, and weed control were also performed throughout the North District.

Our Ditch Crew performed stormwater basin repair projects in the following subdivisions: Montrose West, Bath County Estates, Skyhaven, and Kingsbury Trace. They also performed vegetation clearing in Chenoweth Estates. In addition, they performed routine maintenance and repairs on other various areas throughout Summit County.



Akron-Peninsula Road Beaver Dam Removal

Material Usage

	2015	2016	2017	2018	2019
Salt (in tons)	17,000	12,000	11,500	13,200	10,200
Stone (in tons)	5,200	1,200	1,400	2,400	3,000
Asphalt (in tons)	1,700	720	675	700	1,100
Culvert Pipe (in feet)	1,200	700	650	400	420

Public Services Division

Bridge Section



Fishcreek Road Bridge
Gunite Repairs

In 2019, our Bridge Crews were busy sandblasting, forming, and pouring concrete to replace crumbling parapet walls, wing walls and other important components of the bridges that comprise the life-line of our commerce. The following highlighted projects demonstrate work performed by this crew in 2019.

Bridge Maintenance Completed

- Holzhauer Rd. bridge (SAG 165-0069)-scour repair.
- N. Cleveland Massillon Rd. bridge (BAT 17-1905)-scour repair, debris removal
- Cleveland Massillon bridge (FRA 17-0475)-scour repair, gunite repair
- Akron Peninsula Rd. bridge (BST 10-1127) remove beaver dam and sand bar
- Highland Rd. bridge (SAG111-0000) repair slope protection
- Fishcreek Rd. bridge (STW 119-0338) gunite repair, sand bar removal
- Bolanz Rd. bridge (CUY 81-0039) guardrail rehab
- Cleveland Massillon Rd. bridge (BAT 17-1763) gunite repair
- Granger Road bridge (BAT 79-0221) gunite repair
- Bath Road bridge (CUY 48-0561) gunite repair
- Shaw Road bridge (BAT 199-0068) scour repair, sandbar removal

Upcoming Bridge Maintenance

- **Hawkins Rd over East Branch Cuyahoga River in Richfield Township** – Erosion repairs to bridge foundation, streambank and roadside ditches. Repairs to concrete beams.

In addition to work mentioned above, the Bridge Crew removed numerous logjams, performed bridge deck washing and other various maintenance tasks.

Engineering Division

The Engineering Division is active in the development of plans for highway, drainage, and bridge improvements and new construction on Summit County roads. The engineers and technicians prepare improvement plans for federal, state and locally funded projects on County highways. They also assist townships by preparing plans for township roads and drainage systems. Our project managers are responsible for overseeing large projects from initial scoping through the design phase and into construction.

West Bath Road Bridge Rehabilitation

The West Bath Road Bridge Project included rehabilitation of the existing three-span, continuous steel beam structure (Structure No. AKR-048-0615) carrying West Bath Road (CR 48) over the Cuyahoga River. Rehabilitation items include: new reinforced concrete deck, new bridge railing, structural steel repairs, field painting of structural steel, substructure repairs, new reinforced concrete approach slabs, and minimal approach roadway work (pavement, drainage, guardrail, etc.) necessary to tie-in to the bridge. JD Williamson was the contractor on this \$1.2 million dollar design-build project.



Cleveland-Massillon Road over Wolf Creek
Emergency Bridge Repair Project

Boston Mills Road Geotechnical Study

The Department of the Interior has an annual grant program called the Federal Lands Access Program, offering up to approximately \$300,000 per project for roads that access national parks. For the last several grant cycles SCE has applied for funding to improve Boston Mills Road, starting at the Riverview Road intersection, to complement the work CVNP is doing to create a centralized visitor's center for the national park. In the third round of funding SCE applied for funding to complete a geotechnical study of the entire Boston Mills corridor which has at least 7 active landslides. This study will include 25 boring holes with an average depth of each hole 86 feet, numerous and various types of soil sampling and soil testing including laboratory testing for soil strength. A consulting firm also performed non-destructive seismic testing – sending shock waves in to the hillside to determine the speed the waves travel through the ground giving an approximation of the depth and strength of the underlying geological strata of the hill side. Final product will be an analysis of the depth of the various landslides investigated, a recommendation of how to repair the single most critical slide location plus a cost estimate to repair the seven studied locations using a proration of the worst site.

Medina Line Road Resurfacing

This project is substantially complete, with additional clean-up work to be done in the spring of 2020. This project resurfaced Medina Line Road from State Route 18 to Granger Road, including full and partial depth repairs, shoulder reconstruction, drainage repairs, pavement markings, curbing, guardrail, loop detector replacement, and driveway approaches. This project also included paving four foot wide shoulders, making the roadway safer for cyclists and pedestrians.

Engineering Division

Summit County is proud to offer a county-wide regional pavement maintenance program. We encourage local communities in Summit County to join our bid process, allowing to go out to bid as one unit and, as a result, getting lower per unit costs for all of our communities who participate. Our pavement maintenance programs include hot mix resurfacing, motor paving, chip and seal, asphalt rejuvenation, crack sealing, pavement marking, culvert replacements, guardrail replacements, and concrete road repair. The Construction Section managed a total of \$13.2 million dollars worth of projects in 2019. Below are some of the county-owned roads included in 2019's pavement maintenance program.

405 (Motor Paving)

Brandywine Road from Boston Heights Corporate Line to Highland Road
Hametown Road Granger Road to Bath Road
Medina Line Road from Granger Road to Bath Road

422 (Chip Seal)

Krumroy Road from Arlington Road to SR 241
Truxell Road from Akron-Peninsula Road to Akron-Cleveland Road
Twinsburg Road from Macedonia line to SR 91

448 (Hot Mix Asphalt)

Twinsburg Road from SR 8 to Macedonia line
Chamberlin Road from Highland Road to SR 8
Shaw Road from Granger Road to Hametown Road
Wheatley Road from I-77 to Revere Road
Medina Line Road from Ridgewood Road to SR 18
Tisen Road from Canton Road to Portage Line Road
N. Turkeyfoot Road from Portage Lakes Drive to Vaughn Trail
S. Main Street from Elora to 500 feet north
Killian Road from Sarah Drive to 500 feet west
Cleveland-Massillon Road from Hammond Road to railroad tracks
Valley View Road from Sagamore Road to 1500 east (eastbound lane only)
Cleveland-Massillon Road from Ira Road to Everett Road (OPWC funded project)

Asphalt Rejuvenating

Chaffe Road from SR 82 to Valley View Road
Alger Road from SR 176 to Boston Road
Wheatley Road from Revere Road to Everett Road
Ridgewood Road from Medina Line Road to Hametown Road
Old Mill Road SR 91 to 400 feet east of SR 91
Arlington Road from Green limit to Swartz Road

Asphalt Crack Sealing Program

Cormany Road from Portage Lakes Drive to SR 93
Robinson Road from SR 93 to Cormany Road
Portage Lakes Drive from Cormany Road to S. Turkeyfoot Road
S. Main Street from Green line to Portage Lakes Drive
Riverview Road from Peninsula line to Cuyahoga County line
Sourek Road from Revere Road to Sourek Extension
Boyden Road from Highland Road to SR 82
Brandywine Road from Highland Road to SR 82

Engineering Division

Bridge Section

The Summit County Engineer Bridge Section is responsible for bridge inspections, bridge inventory, coordination of our bridge maintenance program and developing recommendations for rehabilitation or replacement of County bridges. The bridge section also reviews all bridge plans prepared by consultants. Our project inspectors serve a dual role. They inspect our construction work and are ODOT certified bridge inspectors and perform our bridge inspections annually to ensure they remain safe for the traveling public.

RECENTLY COMPLETED BRIDGE PROJECTS

Home Ave. over Little Cuyahoga River in City of Akron – Total Replacement \$1.8M, single-span, prestressed concrete beam bridge with concrete deck, 74 ft long x 76 ft wide.

N. Main St. over Howard St. Ramp in City of Akron – Total Removal \$509,000. Existing steel beam bridge with concrete deck, 47 ft long x 70 ft wide. Replaced with embankment fill.

Medina Line Rd. over Branch Yellow Creek in Bath Township – Total Replacement \$527,000, single-span prestressed concrete beams with concrete deck, 37 ft long x 32 ft wide. Project Cost Share with Medina County at 50% / 50% Split.

Bath Rd. over Cuyahoga River in City of Akron / CVNP / Summit Metro Parks – Major Rehabilitation \$1.2M, 3-span steel beam bridge with concrete deck, 210 ft long x 36 ft wide.

Cleve-Mass Rd over Barberton Reservoir in Copley Township - Emergency D/B Bridge Rehabilitation Project \$410K, prestressed concrete box beams, 48 ft long x 28 ft wide

ONGOING/UPCOMING BRIDGE CONSTRUCTION

Riverview Rd over Furnace Run in City of Cuyahoga Falls / CVNP – Major Rehabilitation in Year 2020, \$1.3M, 3-span prestressed concrete box beam bridge with concrete deck, 124 ft long x 38 ft wide.

Wright Rd. over Pigeon Creek in Copley Township – Total Replacement in Year 2020, \$700,000, single-span prestressed concrete box beam bridge 59 ft long x 32 ft wide.

Various Bridges throughout County – Bridge railing and approach guardrail replacement. Bridge deck waterproofing and asphalt overlays.

Summit County Engineer Bridge Facts

281 total bridges
119 in Townships
162 in Cities and Villages



Ravenna Road Bridge over Tinker's Creek—2019 Bridge Inspection

BRIDGE INSPECTION

Summit County Bridges – Completed required annual inspections and inventory updates for all 281 bridges. SCE's Construction Inspectors are also ODOT qualified Bridge Inspectors who annual inspect / verify the material condition of the County's bridges. In addition, a consulting engineering firm provided inspection services on a total of 72 bridges. In Year 2019, an Underwater Inspection was performed by a Certified Diver on three bridges to assess potential stream scour and foundation undermining.

Summit Metro Parks – Completed the inspection of 9 vehicular bridges and 30 pedestrian and maintenance vehicle bridges for the Summit Metro Parks.

BRIDGE LOAD RATINGS

Five consulting engineering firms performed a structural analysis on a total of 19 bridges to determine their safe load carrying capacity for current Ohio Legal Load Vehicles and Emergency Vehicles. Results of the Load Ratings determined that four bridges throughout the County required Weight Limit Restrictions Signs be posted.

Community Involvement

County Engineer Alan Brubaker and SCE staff attend meetings of numerous committees and organizations that affect roads, bridges, and surface water in the County. Attendance at these meetings enables this Office to communicate the impact of their projects on County facilities, advise them of County projects that may affect their programs, and assist in planning County projects to coordinate with other community programs. Individuals in this office participated in the following committees, organizations, and programs:

Supported Committees & Organizations:

- American Society of Civil Engineers
- American Society of Highway Engineers
- National Society of Professional Surveyors
- Professional Land Surveyors of Ohio
- Association for Bridge and Construction Design
- Institute of Transportation Engineers
- American Public Works Association—Northeast Ohio Chapter Director
- Northern Ohio Service Directors Association
- Watershed Management Association of Ohio
- International Erosion Control Association
- Urban and Regional Information Systems Association
- Akron Metropolitan Area Transportation Study, Technical Advisory Committee, Policy Committee, and Citizen Involvement Committee
- County-wide program administrator—National Pollutant Discharge Detection and Elimination System
- Summit County Transportation Improvement District Executive Committee
- Northeast Ohio Four County Regional Planning and Development Organization
- Ohio Public Works Commission—District 8
- Natural Resources Assistance Council—District 8
- Summit County Emergency Management Executive Committee
- Summit County Board of Control
- Summit County Information Technology Board
- County Engineer's Association of Ohio
- Township Association of Summit County
- Joint Safety Committee—Bath, Copley, and Fairlawn
- Community Partnership Program-Economic Development grant program administered by the Summit County Engineer's office to promote economic development related road projects throughout Summit County
- Miniature Bridge Building Competition-SCE and our engineering consulting firm partners run a bridge building competition for Summit County High School students and offer participants scholarships if they go on to major in an engineering field in college
- Summit and Portage County Mayors, Service Directors, and City Managers Regional Group
- Salt Subcommittee to oversee the administration of salt bidding for the Community University Education Purchasing Alliance
- An Engineer to Each Township—SCE has assigned an employee to represent each Summit County township. They attend township meetings and facilitate ongoing communication between the County and the townships
- County Commissioners and Engineers Administrative Professionals Association
- Society for Human Resource Management (SHRM)
- Akron Area SHRM
- Greater Akron Public Personnel Professionals
- National Public Employer Labor Relations Association
- Ohio Public Employer Labor Relations Association
- Ohio Government Finance Officers Association
- Association of Government Accountants

Engineer Brubaker also finished his term Treasurer for the International Soap Box Derby in 2019 and sits on the Boy Scouts of America Eagle Scout Recognition Committee.

Engineering Division

Drainage Section

The Drainage Section coordinates requests, reviews, inspects, designs and schedules improvements to ditches, culverts, storm sewers and other drainage-related items for landowners, townships and/or County maintenance. Preliminary studies and improvement plans were prepared for several township and county drainage projects. There were several proposed commercial improvement plans reviewed

2019 Drainage Projects

Bath	N. Hametown Road Culvert 253-39588 Analysis	Conducted a drainage study to determine if the existing 15" culvert is adequately sized. Determined that the culvert is adequately sized and no additional analysis was required.
Coventry	Portage Lakes Drive Culvert 75-09699 @ N Turkeyfoot Road	Design completed to rehab existing box culvert over feeder canal. Work to be completed in 2020.
Northfield Center	Crestwood Park Drainage Study	Preliminary drainage study for two detention basins in Crestwood Park to relieve flooding in the vicinity of Crestwood Drive and Marwyck Drive.
Springfield	Killian Road Culvert 135-20625	Drainage study conducted in response to flooding of roadway and commercial property. Designed a replacement 15" culvert and replaced by Public Services Department.
Countywide	Storm Sewer Video/Inspection Contract	Countywide program to provide full inspection of inaccessible drainage systems. Inspection of enclosed systems was completed on four county highways in 2017, with final mapping provided in 2018. A second inspection program is scheduled to be completed in 2019.

2019 Commercial Plan Reviews

Bath

- 1990 N. Cleveland-Massillon Road Building Addition
- 4655 Medina Road Office Building
- Grace Church - 754 Ghent Road
- Diyanni Homes Model Home - NE corner of SR 18/N. Hametown

Northfield Center

- Dunkin—240 E. Aurora Road

Richfield Township

- Michael Angelo's Winery Parking Lot Expansion - 5005 Broadview Road

Twinsburg Township

- Churchill Steel - 7851 Bavaria Road

Copley

- Copley Senior Lifestyle Care Facility Ph. 2 - 4071 Heritage Center Drive
- Dan's Wholesale Carpet & Flooring - 29 Rothrock Loop
- Redwood Apartments - Ridgewood Road
- Stewart's Caring Place - Ridge Park Drive

Coventry

- Akron Baptist Temple Addition—578 Killian Rd
- ANR Electric - 3803 State Road
- Helen Scott Builder's Shop - Killian Road
- Point Blank Gun Range - 812 Killian Road

Springfield

- Stark State CDL Training Facility - Picton Parkway
- Superior Drainage - 1080 Killian Road

Engineering Division

Surface Water Management District

Responding to resident concerns for stormwater management as a result of severe flooding in 2014, Bath Township officials evaluated a variety of options and voluntarily opted into a plan administered through the Summit County Engineer's Office. The Summit County Engineer's Surface Water Management District (SWMD) was created over two years ago and, under the plan, residents and businesses are charged a stormwater fee to be used to remediate flooding and erosion in the township. Fee revenue may also be used to address flooding and erosion in areas outside the township, provided the improvements directly benefit Bath Township.

Since its inception, the SWMD has collected roughly \$700,000 in stormwater fee revenue and spent roughly \$400,000 for preparation of two separate comprehensive studies of the Yellow Creek Watershed. The SWMD uses a watershed approach in its planning strategy and, from the findings in the two reports, there were some 60 potential projects identified in the Yellow Creek Watershed eligible for remediation. Overseeing the Engineer's SWMD is a stormwater committee comprised of township residents. The committee was formed last year to review eligible stormwater projects and make recommendations to the County Engineer on the priority of projects to be undertaken.

Concurrent with the Engineer's Surface Water Management District is the pending Summit County Common Pleas Court Petition to Form a Conservancy District, a separate program to address stormwater. Initiated by the non-profit group Yellow Creek Foundation, petitioners seek formation of a district that might duplicate the efforts of the SWMD, with no guarantee the Yellow Creek Conservancy District would coordinate its studies, goals and projects with those currently in progress through the SWMD. Conservancy districts derive their authority under Ohio law and have extensive power to assess fees, as well as the power of eminent domain. The conservancy case procedural history shows that several Common Pleas judges have been reassigned on the case, with the most recent transfer assignment on January 14, 2020.

The Citizens for Yellow Creek, a resident group formed to oppose creation of a conservancy district has published information on its website distinguishing the two competing proposals and how the conservancy district would negatively impact Bath Township. Bath Township has intervened in the pending conservancy case and retained legal counsel to represent the community's interests.

The Summit County Engineer's SWMD has made significant progress in responsibly using fee revenue to prepare two comprehensive studies of the Yellow Creek Watershed, as well as appointing a resident advisory committee to provide input on potential projects eligible for remediation. With the many layers of accountability and oversight, the SWMD is well poised as the best solution for stormwater management in Bath Township and the Yellow Creek Watershed as a whole. The conservancy case remains pending with no decision yet on the appointment of a conservancy court. Nor has the court assigned a date for a hearing on the merits of the case. However, residents in the watershed who oppose the conservancy district proposal will have an opportunity to provide comment on the propriety of forming a district. All townships, villages and cities in Summit County are invited to join the SWMD.

SWMD's progress, plans, and reports can be found on the internet at: <https://www.summitengineer.net/pages/Surface-Water-Management-District.html>

Assessed Subdivisions

Owners of lots within most township subdivisions developed since the mid-1980s pay Drainage Maintenance Assessments along with their real estate taxes. This funding pays for work that cannot be paid for by our road and bridge funds. Our maintenance crews perform routine inspection and maintenance of the stormwater management facilities (SWMF) within those assessed subdivisions with known drainage issues. In addition, our crews completed major clearing, grading and repair projects at SWMFs in 5 subdivisions. In 2019 SCE had Davey Resource Group and Emerald Environmental continuing contracts started in 2018 to design more complex fixes to several assessed subdivisions. Recently Davey Resource Group completed a natural stream-bank stabilization project along West Fork in Bath Township.

Engineering Division

Highway Section

The Highway Section is responsible for highway design, installation and maintenance of traffic control devices such as signs, pavement markings and traffic signal systems/warning flashers. These functions are integral parts of all improvements made to the Summit County highway system. In addition to the section's primary function of preparing plans for roadway improvements, the Highway Section also conducts studies and/or evaluations of roadway traffic, geometrics, physical features and access. The Highway Section determines the need for signage, guardrail, lane assignments/construction, speed limit revisions and other safety capacity improvements. This Section also reviews and coordinates construction projects to ensure that alternate routes for traffic detours are free of major obstructions and available during the construction season.

<p><u>Design Completed</u> Copley -- Cleve-Mass/Ridgewood Intersection (Addition of SB & EB Turn Lanes) Springfield -- Canton Road resurfacing from Salmon to Tri-County Plaza</p> <p><u>Current Design</u> Olde Eight/Twinsburg -- Intersection Improvements</p> <p><u>Current Studies</u> CEAO Safety Studies -- Guardrail Inventory CEAO Safety Studies -- Pavement Marking Inventory</p>	<p><u>Safety Studies</u> Brookwall/Brookmont Intersection CEAO Safety Studies -- No Passing Zone Study Killian/Myersville Intersection Olde Eight/Twinsburg Intersection Olde Eight Road Speed Study -- Valley View to SR 8</p> <p><u>Construction Complete</u> Bath -- Medina Line Road (SR 18 to Granger) Bath -- SR 18 Walkway</p>
--	--

Allotment Section

The Allotment Section works with developers, engineers, contractors, governmental agencies and the public to regulate the design, construction and acceptance of subdivisions. This section also coordinates inspections under the Engineer's annual stormwater maintenance program. This consists of inspecting detention/retention ponds, catch basins, headwalls and storm sewers in subdivisions throughout the County. When required, corrective measures are taken to update the stormwater facilities to assure that stormwater is appropriately managed in allotments.

<u>2019 SUBDIVISION PLAN REVIEW & CONSTRUCTION INSPECTION</u>
Blue Jaye Farm Subdivision
Columbia Road Extension
Heartridge Subdivision
Hillside Estates Phase 4
Lions Park Allotment
Mill Run Phase 3
Mottl Reserve Subdivision
Olde Oak Subdivision
Reserve at North Revere
Retreat at Liberty Lakes
Ridge Park Drive

<u>2019 FINAL PLATS</u>			
TOWNSHIP	SUBDIVISIONS	SUBLOTS	ACRES
Bath	1	2	6
Copley	1	1	6
Sagamore Hills	1	38	25
Springfield	1	2	29
Twinsburg	1	23	12.5
TOTALS	5	66	78.5

<u>2019 PRELIMINARY PLANS</u>			
TOWNSHIP	SUBDIVISIONS	SUBLOTS	ACRES
Bath	1	7	25
Richfield	1	1	79
Twinsburg	1	56	62
TOTALS	3	64	166

Engineering Division

Construction Section

The Construction Section is responsible for the quality, cost, and timeliness of improvements to the County's highways and bridges. This includes reviewing preliminary plans, acquiring property, relocating utilities, construction inspection, testing construction materials, and completing final construction contract documents.

2019 Construction Projects

Road Projects

	<u>Cost</u>
N. Medina Line Road	\$ 1,411,160.86
Chamberlin Road	\$ 541,336.10

Bridge Projects

	<u>Cost</u>
Cleveland-Massillon Rd over Wolf Creek	\$ 462,995.47
North Main Street over Howard St Ramp	\$ 509,108.00
Medina Line Road Bridge over Yellow Creek	\$ 526,160.00
Bath Road over Cuyahoga River	\$ 1,178,884.50

Drainage Projects

Storm Sewer Cleaning and Videotaping	\$ 93,343.25
--------------------------------------	--------------



Cleveland-Massillon Road over Wolf Creek
Emergency Bridge Repair

The Construction Section manages the Regional Pavement Maintenance Program. We invite all pavement owners in Summit County to join in joint projects for common roadway maintenance work types. The goal is to achieve savings through economy of scale and standardization of specifications.

The individual entities develop their own scopes and provide their own inspection. This office condenses the numerous smaller projects into larger projects and advertises, awards, and administers the projects.

Total Value of All Improvements Managed by the Construction Section: \$13,232,119.90

<u>Regional Pavement Maintenance Program</u>	<u>SCE Cost</u>	<u>Other Cost</u>	<u>Total Cost</u>
405 Motor Paving	\$700,974.35	\$ 636,460.40	\$ 1,337,434.75
422 Seal Coat	\$335,698.68	\$1,297,243.84	\$ 1,632,942.52
448 North	\$1,134,691.19	\$ 537,074.56	\$ 1,671,765.75
448 South	\$ 922,355.60	\$ 981,144.98	\$ 1,903,500.58
Asphalt Crack Sealing	\$ 49,325.60	\$ 144,389.51	\$ 193,715.11
Asphalt Rejuvenation	\$ 92,066.21	\$ 35,871.20	\$ 127,937.41
Concrete Pavement Repair	\$ 0	\$ 524,417.88	\$ 524,417.88
Guardrail	\$ 108,896.30	\$ 29,750.00	\$ 138,646.30
Catch Basin Repair	\$46,956.00	\$ 215,289.00	\$ 262,245.00
Pavement Marking	\$ 145,369.00	\$ 225,341.87	\$ 370,710.87
Total	\$3,536,332.93	\$ 4,626,983.24	\$ 8,163,316.17

Engineering Division Construction Section

The Construction Section provides assistance as requested by townships and various other municipalities, which may include review of construction documents and plans, preparation of cost estimates and bid documents, inspection of construction activities and contract administration. This Section also performs annual inspection of bridges, culverts and roads. In addition the Construction department administers permits for road openings and closings, special hauling, ditch enclosures, and driveway culverts.

Utility Coordination

Existing utilities, private and public, overhead and underground, conflict with almost every construction project. Our Utility Coordinator is responsible to ensure that all conflicts are identified and addressed before construction begins. This entails detailed reviews of preliminary construction plans, visits to the proposed construction site, and constant coordination with representatives of the utility companies.

In addition, to coordinating utilities for this office, our Utility Coordinator also performs this work for other government agencies that do not have a Utility Coordinator.

Right-of-Way Acquisition

Many public works projects require the acquisition of property. Our office is very fortunate to have a skilled staff member trained in all aspects of ROW acquisition.

Construction Management, Inspection, and Materials Testing

Our project coordinators and construction inspectors work with our general contractors to ensure that work is performed in conformance with the contract documents.

Other Construction Projects Administered, Inspected, and Tested	
Township	Projects
Bath	3
Boston	0
Copley	3
Coventry	1
Northfield Center	1
Richfield	1
Sagamore Hills	5
Springfield	2
Twinsburg	6
Other	
City of Barberton	1
City of Green	2
City of New Franklin	2
Village of Richfield	2
Total	29



W. Bath Road Bridge Rehabilitation Project

Administration Division

Human Resource Section

The Human Resource functions of the Engineer's Office are coordinated through our Personnel Administrator and the County Department of Human Resources which reports to the County Executive. The Personnel Administrator assures compliance with all rules and policies established by the County Human Resource Commission, the County Department of Human Resources and any federal, state or county labor laws. The Personnel Administrator also maintains an employee database for all employees of the County Engineer.

The number of employees in remained unchanged except for one position in transition at the end of 2019.

Bargaining unit employees continue to be under the agreement negotiated in 2018 and represent 70% of the total workforce. Three Heavy Equipment Operators are represented by the International Union of Operating Engineers (IUOE). The remaining bargaining employees are represented by two units of AFSCME.

Employees by Employment Status		
	2019	2020
Bargaining	70	67
Non-Bargaining	20	21
Unclassified	10	11
Total	100	99

Employees by Division		
	2019	2020
Maintenance	67	65
Engineering	25	26
Administration	8	8
Total	100	99

Finance Section

Operating Expenditures

Overall, operating costs increased by 5.5% in 2019 as the full impact of the increase in employees reported in 2018 hit year-end expenditures. Personnel costs increased by 5.7% over 2018's year-end total. This is primarily due to the late year hiring that occurred in 2018. Other operating costs also increased by around 5.7%. However, the continued decline in debt service expenditures offset a portion of those increases.

Operating Expenditures	2018	2019
Personnel	\$7,998,077	\$8,457,534
Operations	\$2,801,455	\$2,962,226
Debt Service	\$317,098	\$312,558
Total	\$11,116,630	\$11,732,318

Capital Improvement Program

In 2019, capital program expenditures increased by over \$2.6 million to nearly \$8.5 million. This increase was possible due to major increases in our local revenue from a Council Approved license tax increase and a State approved gas tax increase (see Revenue). The increase in 2019 is the fourth consecutive year we have been able to increase capital expenditures.

Revenue

Total revenue from all sources (including non-tax revenue) increased by nearly 16% in 2019. However, our office's primary source of revenue is from vehicle license taxes and gasoline taxes. Total tax revenue increased by 18.7% due to tax increases approved in 2018 and 2019.

In 2018, the county approved a \$5.00 increase in the county permissive license tax. This increase resulted in an 18% increase or more than \$2.4 million of additional revenue for the MVGT fund in 2019. Revenue from license taxes in 2019 was nearly \$16 million and exceeded the total tax revenue from all sources received in 2018.

In addition, the State of Ohio increased the state gas tax by 10.5 cents and diesel fuel tax by 19 cents effective July 1 of 2019. The portion of the tax distributed to counties resulted in over \$500 thousand of additional revenue in 2019 and the full impact of the increase will be felt in our 2020 revenue.

Tax Revenue		
	2018	2019
License Taxes	\$13,475,699	\$15,931,291
Gasoline Tax	\$2,417,404	\$2,939,200
Total	\$15,893,103	\$18,970,491

Current and Upcoming Projects

- **Wright Road Bridge Replacement:** Project is under contract and will be completed in the fall of 2020. Contract amounts \$701,000.00 to be funded with 80% federal grant funding.
- **Riverview Road Bridge over Furnace Run Reconstruction (Cuyahoga Falls):** This \$1.3 million dollar bridge project is under construction and will be completed in early summer of 2020.
- **Boston Mills Road Geotechnical Study:** This \$350,000 project is under contract and the study will be completed in mid-summer 2020.
- **Cleveland Massillon Road at Ghent Road Intersection Improvement:** This project is under construction and will be completed in the summer of 2020. Funding sources for the \$700,000 dollar project include the SCE, Bath Township, the Embassy Parkway Landowner's Association and the Summit County Transportation Improvement District.
- **West Bath road Landslide Repair:** A \$1.5 million dollar landslide stabilization project will be constructed this summer and fall. Completion is anticipated in the late fall of 2020.
- **Canton Road/US 224.SR 91 improvement:** ODOT is administering this \$12.2 million intersection improvement. ODOT maintains three legs of the intersection and Summit County owns the southern leg of the intersection. Construction began in 2019 and will end in 2021.
- **Cleveland Massillon Road at Ridgewood Road:** This intersection improvement project will add a southbound right turn lane and an eastbound left turn lane with a reconstructed traffic signal. The project is estimated to cost \$420,000 will be completed in the fall of 2020.
- **Portage Lakes Drive Resurfacing:** This \$370,000 resurfacing project is under contract and will be completed in the summer of 2020.
- **Boston Mills Road Part 2:** From the Blue Hen Falls parking lot to the end of Part 1, this project will provide wider shoulders for pedestrians and bicyclists and resurface the roadway. The project is estimated to cost \$600,000 and will be under construction in 2020.
- **Canton Road Resurfacing:** This \$380,000 project is under contract and will be completed in the summer of 2020.
- **Cuyahoga Valley National Park Pedestrian Bridge:** Project is under a design contract to construct a new pedestrian bridge over the Cuyahoga River about 200 feet south of Boston Mills Road. The design and construction are 100% federally funded. The project will be constructed in the summer of 2022.
- **Cleveland Massillon Road Sidewalk – Bath Township:** Project is in the planning phase to prepare documents for a new sidewalk in Bath Township from Medina Road (SR 18) to Springside Drive along the west side of the highway. This is a partially federally funded project with Bath Township providing the matching funds and paying for all cost overruns.

Current and Upcoming Projects

Resurfacing Projects: Federal funds have been obtained for several resurfacing and shoulder widening projects in the county. Design firms are in the process of being hired this spring to design the following projects:

Project	From	To	Status	Sale Date	Federal Funds
Ravenna Rd Pt.1	Twinsburg City Limits	Old Mill Rd	Design Pending	June 2021	\$700,000
Olde Eight Rd	Boston Heights Village Limits	Highland Rd.	Design Pending	June 2021	\$700,000
Cleve-Massillon Rd. Pt 1	Norton City Limits	North of Minor Road	Consultant Hired	March 2022	\$700,000
Cleve-Massillon Rd. Pt 2	North of Minor Road	Fairlawn City Limits	Design Pending	April 2022	\$700,000
Smith Road	Fairlawn City Limits	Sand Run Road	Design Pending	April 2022	\$700,000
White Pond Drive	Copley Road	Akron City Limits	Design Pending	May 2022	\$600,000
Valley View Road	Olde Eight	State Route 8	Design Pending	June 2022	\$300,000
Akron Cleveland Road	Cuyahoga Falls City Limits	Boston heights Village Limits	Design Pending	June 2022	\$700,000
Swartz Road	S. Main Street	Akron City Limit	Planning Phase	Summer 2023	
Ravenna Road Part 2	Old Mill Rd	Portage County Line	Planning Phase	Summer 2023	

Future Bridge Projects: Federal funds have been obtained for several of the following bridge projects. We are in the process of selecting design firms to prepare the plans.

Bridge Project	Location	Status	Sale Date	Federal Funds
Brandywine Road	Over Brandywine Creek	Consultant Selection Process	Oct 2021	\$ 0
Granger Road	Over Yellow Creek	Planning Phase	2024	\$1,022,000
Pressler Road	Over S. Fork of Tuscarawas River	Planning Phase	Oct 2022	\$1,000,000
Christman Road	Over Nimisila Reservoir	Planning Phase	TBA	\$923,400

Alan Brubaker, P.E., P.S. Summit County Engineer

**Main Office
538 E. South Street
Akron, Ohio 44311
Phone: (330) 643-2850
Fax: (330) 762-7829**

For more information on projects of the Summit County Engineer's Office please contact us or check our website:

www.summitengineer.net

Pothole Season

Summit County Public Services Department is open Monday - Friday 7:30 a.m. – 4:00 p.m. for reporting any potential problems or concerns affecting the roadways throughout the County.

We also have a 24/7 reporting system to gather information reports of roadway problems. To report a pothole or roadway defect call 330-643-2860.

Surface Water Management Program Contact Information Now Available

Phone: (330) 643-8010

Email: SWMD@summitengineer.net

Web: www.summitengineer.net/services/surface-water-management



**Follow us on Twitter!
www.twitter.com/summitengineer
[@SummitEngineer](https://twitter.com/SummitEngineer)**

